

**TRUST**

## 2019 ANNUAL REPORT

FOR THE UTAH LOCAL GOVERNMENTS TRUST





**The Trust is a transparent government entity, fully accountable to its 547 members.**

Our state-wide membership includes 79% of Utah's Local Governments: 92% of Utah's Cities and Towns, 75% of Utah's Local and Special Service Districts, and 34% of Utah's Counties.

The Trust protects \$5.8 billion in member assets and hundreds of millions in liability risks. In 2019 alone, the Trust paid more than \$22.3 million in member claims and expenses, while still, strengthening member security by \$10 million. This added security will protect members from the uncertain storms of tomorrow.

More than 85% of governmental entities nationwide partner with risk pools, because risk pools understand their unique needs and challenges, and because the pools themselves are governmental entities with no profit motive. Even among government risk pools, the Trust is unique. The Trust leverages its size, scale, efficiencies and strategic partnerships to benefit members even better than other pools. It's the law of large numbers and disciplined management that make this possible.

In 2019, the Utah Local Governments Trust welcomed 29 new members to our pooled programs. Not surprisingly, 99.4% of members renewed their partnership with the Trust. The Trust provides the coverage and low rates our members require, which is reflected in the enduring relationships we have with our members.

Our results are your results. In 2019 the Utah Local Governments Trust again delivered many positive results. Because of the Trust's performance, our Board of Directors authorized \$1,000,000 in premium relief credits, discounts, and further rate stabilization. Results in 2019 include: a 30% reduction in indemnity claims; a 26% reduction in loss adjustment expense, 61% reduction in premium tax, and a 19% reduction in general and administrative expenses. These savings provide the foundation for low rates, and returning money back to our members.

Our mission is to deliver the best specialized insurance products and services at the lowest sustainable rates. Our values include passion, integrity and teamwork. We listen, we respond, and we deliver. Our team and members are first-rate. We will continue to lead with innovation, accountability, and discipline – course correcting along the way. Thank you for your continued trust in the Trust.

A handwritten signature in black ink that reads "Steven A. Hansen". The signature is fluid and cursive, written in a professional style.

**Steven A. Hansen** CEO  
Utah Local Governments Trust



**Gary L. Hatch** BOARD CHAIR / EXECUTIVE COMMITTEE  
Manager,  
Davis County Mosquito Abatement District



**Todd S. Beutler** EXECUTIVE COMMITTEE  
General Manager,  
Cache Valley Transit District



**Craig W. Buttars** EXECUTIVE COMMITTEE  
Executive,  
Cache County



**Stephanie L. Miller** EXECUTIVE COMMITTEE  
Mayor,  
Hyrum City

Great things in  
business are never  
done by one person

They're done by  
a team of people.

– Steve Jobs



**Robert M. Hale**  
Mayor,  
Midvale City



**Shawn B. Milne**  
Commissioner,  
Tooele County



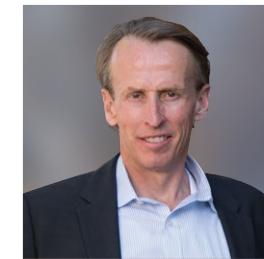
**Kenneth F. Neilson**  
Mayor,  
Washington City



**Bradley M. Powell**  
General Manager,  
Midvalley Improvement District



**Pamela A. Roberts**  
Executive Director,  
Wasatch Front Waste  
& Recycling District  
*Appointed*



**Christopher  
F. Robinson**  
Council Member,  
Summit County

The Trust has insuring relationships with **547 members.**

**92%** of Utah's Cities and Towns,

**75%** of Utah's Local and Special Service Districts, and

**34%** of Utah's Counties.

We honor our fiduciary responsibility - financial strength guarantees our ability to deliver on our promises in times of need. The financial statements shown are derived from the Trust's audited financial statements for 2019 and do not include notes.

A copy of the complete audited financial statements can be obtained from the Trust upon request.

**ASSETS**

**CURRENT ASSETS:**

	2019	2018
Cash	\$ 208,603	\$ 273,616
Investment in State of Utah Public Treasurers' Investment Fund	32,015,194	16,132,317
Receivables:		
<i>Premiums</i>	432,458	887,372
<i>Investment income</i>	304,585	439,931
<i>Administrative fees</i>	73,250	115,247
<i>Reinsurance recoverable on paid claims</i>	4,492,657	5,920,107
<i>Other</i>	13,115	19,128
Prepaid expenses	1,267,003	1,003,562
<b>TOTAL CURRENT ASSETS</b>	<b>\$ 38,806,865</b>	<b>\$ 24,791,280</b>

**NON-CURRENT ASSETS:**

Investment in debt securities	74,951,370	78,173,912
Restricted investment in debt securities held by State Treasurer	5,967,310	5,970,724
Capital assets	6,029,134	6,322,813
Deposit with Constitution State Services LLC	89,017	112,552
Deposit with NLC Mutual Insurance Company	525,295	525,295
<b>TOTAL NON-CURRENT ASSETS</b>	<b>\$ 87,562,126</b>	<b>\$ 91,105,296</b>

<b>TOTAL ASSETS</b>	<b>\$ 126,368,991</b>	<b>\$ 115,896,576</b>
---------------------	-----------------------	-----------------------

**DEFERRED OUTFLOWS OF RESOURCES**

	2019	2018
<b>RELATED TO PENSIONS</b>	<b>\$ 664,642</b>	<b>\$ 520,636</b>

**LIABILITIES****CURRENT LIABILITIES:**

	2019	2018
Current portion of estimated unpaid claims and claims adjustment expenses	\$ 16,696,298	\$ 16,786,112
Trust premium relief credit liability	995,748	1,954,352
Unearned premiums	8,128,857	7,904,236
Accounts payable and accrued expenses	1,229,311	906,165
State premium tax payable	169,907	215,379

<b>TOTAL CURRENT LIABILITIES</b>	<b>\$ 27,220,121</b>	<b>\$ 27,766,244</b>
----------------------------------	----------------------	----------------------

**NON-CURRENT LIABILITIES:**

Net pension liability	1,015,989	617,976
Total OPEB obligation	472,822	431,586
Estimated unpaid claims and claims adjustment expenses, net of current portion	24,541,116	23,529,043

<b>TOTAL NON-CURRENT LIABILITIES</b>	<b>\$ 26,029,927</b>	<b>\$ 24,578,605</b>
--------------------------------------	----------------------	----------------------

<b>TOTAL LIABILITIES</b>	<b>\$ 53,250,048</b>	<b>\$ 52,344,849</b>
--------------------------	----------------------	----------------------

**DEFERRED INFLOWS OF RESOURCES**

	2019	2018
<b>RELATED TO PENSIONS</b>	<b>\$ 51,304</b>	<b>\$ 306,297</b>

**NET POSITION**

	2019	2018
Invested in capital assets	6,029,134	6,322,813
Unrestricted	67,703,147	57,443,253

<b>TOTAL NET POSITION</b>	<b>\$ 73,732,281</b>	<b>\$ 63,766,066</b>
---------------------------	----------------------	----------------------

**REVENUES & EXPENSES****OPERATING REVENUES:**

Gross premiums earned	\$ 30,770,565	\$ 30,230,658
Reinsurance premiums	(5,365,898)	(4,879,601)
Trust premium relief credit	(947,316)	(1,954,352)

<b>NET PREMIUMS EARNED</b>	<b>\$ 24,457,351</b>	<b>\$ 23,396,705</b>
----------------------------	----------------------	----------------------

Administrative fees	671,114	687,066
Other revenue	195	14,978

<b>TOTAL OPERATING REVENUES</b>	<b>\$ 25,128,660</b>	<b>\$ 24,098,749</b>
---------------------------------	----------------------	----------------------

**OPERATING EXPENSES:**

Claims and claims adjustment expenses	14,624,195	16,297,469
State premium tax expense	220,589	603,413
General and administrative expenses	4,910,383	4,791,197

<b>TOTAL OPERATING EXPENSES</b>	<b>\$ 19,755,167</b>	<b>\$ 21,692,079</b>
---------------------------------	----------------------	----------------------

<b>OPERATING INCOME</b>	<b>\$ 5,373,493</b>	<b>\$ 2,406,670</b>
-------------------------	---------------------	---------------------

**NONOPERATING REVENUES (EXPENSES):**

Investment income	3,341,596	2,704,084
Unrealized investment gain (loss)	437,820	(618,164)
State premium tax refunds	813,306	0

<b>TOTAL NONOPERATING REVENUES (EXPENSES)</b>	<b>\$ 4,592,722</b>	<b>\$ 2,085,920</b>
---	---------------------	---------------------

<b>CHANGE IN NET POSITION</b>	<b>\$ 9,966,215</b>	<b>\$ 4,492,590</b>
-------------------------------	---------------------	---------------------

<b>NET POSITION AT BEGINNING OF YEAR</b>	<b>\$ 63,766,066</b>	<b>\$ 59,273,476</b>
--	----------------------	----------------------

<b>NET POSITION AT END OF YEAR</b>	<b>\$ 73,732,281</b>	<b>\$ 63,766,066</b>
------------------------------------	----------------------	----------------------

SHANE SORENSEN	Alpine, City Administrator	LYNELL SMITH	Housing Authority of Utah County, Executive Director	NICK TATTON	Price City Municipal, Human Resources Director	DEBBIE WINN	Tooele, Mayor
JOHN GULDNER	Alta, City Manager	ANDRE BARTLOME	Housing Connect, Finance Director	JEFF RICHENS	Price River Water Improvement District, Director	SCOTT BROADHEAD	Tooele County, County Attorney
RYAN GOODRICH	Ashley Valley Water & Sewer Improvement District, General Manager	CLARK FAWCETT	Hurricane, City Manager	ROBERT VERNON	Provo Housing Authority, Executive Director	MARILYN GILLETTE	Tooele County, Clerk
TODD BARSON	Bear River Health Department, Director	RON SALVESEN	Hyrum, City Administrator	MATT CREAMER	Richfield	SHAWN MILNE	Tooele County, Commissioner
MARK REID	Bluffdale, City Manager	DALE COULAM	Ivins, City Manager	RODGER WORTHEN	Riverdale, City Administrator	KENDALL THOMAS	Tooele County, Commissioner
BRET HOWSER	Brian Head, City Manager	SHAYNE SCOTT	Kaysville, City Manager	RYAN CARTER	Riverton, Attorney	TOM TRIPP	Tooele County, Commissioner
AMY ADAMS	Cache County, Human Resources Director	KATIE WITT	Kaysville, Mayor	RYAN SNOW	Roosevelt, City Manager	SHAWN WARNKE	Tremonton, City Manager
TODD BEUTLER	Cache Valley Transit District, General Manager	JASON WALKER	Lehi, City Administrator	MATTHEW ANDREWS	Roy, City Manager	ROBIN O'DRISCOLL	Uintah Recreation District, Executive Director
SETH MARSING	Carbon County, Clerk/Auditor	ADAM COWIE	Lindon, City Administrator	MARK THYGERSON	Salt Lake City Department of Airports, Airport Risk Manager	MIKE GREENSIDES	Unified Fire Authority, Captain
BRANT HANSON	Centerville, City Manager	KYMBER HOUSLEY	Logan, Attorney	JERRY KNIGHT	Sandy Suburban Improvement District, General Manager	LEGRAND W. BITTER	Utah Association of Special Districts, Executive Director
DENNIS CLUFF	Clinton, City Manager	KENT BARTON	Manti, Executive Director	BROCK JACOBSEN	Santa Clara, Assistant City Manager	BILL LEE	Utah County, Commissioner
TIM TINGEY	Cottonwood Heights, City Manager	BRYCE HADERLIE	Midvale	BENJAMIN REEVES	Santaquin, City Manager	DAVID SHAWCROFT	Utah County, Civil Division Chief
BEN HILL	Cottonwood Heights Parks & Recreation Service Area, Director	KANE LOADER	Midvale, City Manager	MARK CHRISTENSEN	Saratoga Springs, City Manager	CAMERON DIEHL	Utah League of Cities and Towns, Executive Director
IFO PILI	Eagle Mountain, City Administrator	BRAD POWELL	Midvalley Improvement District, General Manager	CRAIG GILES	Smithfield City Corporation, City Manager	DAVID (DAVE) PITCHER	Utah Transit Authority, Manager
ROB DOTSON	Enoch, City Manager	JOHN GEILMANN	Millcreek, City Manager	MICHAEL LUERS	Snyderville Basin Water Reclamation District, General Manager	QUINN BENNION	Vernal, City Manager
ADAM BOWLER	Enterprise, City Administrator	JOEL LINARES	Moab, City Manager	MATT DIXON	South Ogden, City Manager	MIKE DAVIS	Wasatch County, County Administrator
SHAUN KJAR	Ephraim, City Manager	TY BAILEY	Morgan, City Manager	CRAIG WHITE	South Valley Sewer District, General Manager	PAM ROBERTS	Wasatch Front Waste & Recycling District, Executive Director
MICHAEL HOLT	Fillmore, Mayor	SETH ATKINSON	Nephi, City Administrator	LEE RAWLINGS	South Valley Water Reclamation Facility, General Manager	NATHAN RICH	Wasatch Integrated Waste Management District, Executive Director
BRANDON GREEN	Fruit Heights, City Manager	DAVID ZOOK	Nibley, City Manager	TROY FITZGERALD	Springville, City Administrator	JUERGEN KORBANKA	Wasatch Mental Health Services Special Service District, Executive Director
CLINT JENSEN	Granger Hunter Improvement District, General Manager	ALAN LUCE	North Logan, City Administrator	SHAWN GUZMAN	St. George, Attorney	ROGER CARTER	Washington, City Manager
BRENT MARSHALL	Grantsville, Mayor	RODGER HARPER	North Pointe Solid Waste Special Service District, General Manager	THOMAS C. FISHER	Summit County, County Administrator	TOM HANSON	Washington Terrace, City Manager
MATT BROWER	Heber, City Manager	KEN LEETHAM	North Salt Lake, City Manager	JOHN TAYLOR	Taylorsville, City Administrator	KYLE LAWS	West Point, City Manager
DENNIS GUNN	Heber Valley Special Service District, General Manager	LORI TALBOT	Panguitch, City Manager	ROGER BAKER	Tooele, Attorney	GARY URESK	Woods Cross, City Administrator
BRETT WOOD	Herriman, City Manager	CLEVE MATHESON	Parowan, City Manager				
JAN MCCOSH	Hideout, City Administrator	DAVID TUCKETT	Payson, City Manager				
NATHAN CRANE	Highland, City Manager	SCOTT DARRINGTON	Pleasant Grove, City Administrator				
KIM WILFORD	Housing Authority of Salt Lake City, Deputy	BILL COBABE	Pleasant View, City Administrator				

Executive

*The Trust is the partner of choice for 79% of Utah's local governments, with 99.4% member retention.*



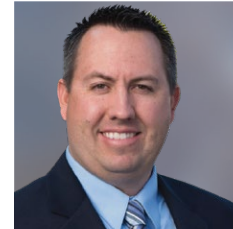
**Steven A. Hansen**  
Chief Executive Officer

Loss Prevention

*Loss Prevention pays! We have 50-plus years collective experience. Our team works to safeguard your most valuable assets: People, Time, and Money. We tailor our services to you.*



**Doug Folsom**  
Loss Prevention Manager



**Brent Oakeson**  
Loss Prevention Consultant



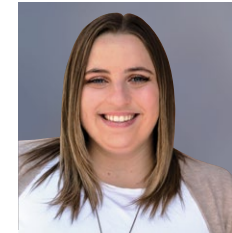
**Jason Watterson**  
Loss Prevention Consultant

Underwriting

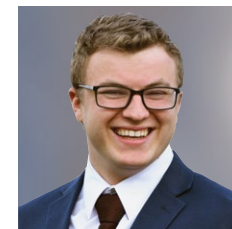
*We insure the vast majority of Utah's Local Governments. We leverage data analytics to spread the risk. The Law of Large Numbers, quality partnerships, and statistical analysis and models allow us to deliver the lowest long-term sustainable cost of risk to members.*



**James Whittier**  
Underwriter Manager



**Mallory Jones**  
Data Analyst - Underwriter



**Ben Matson**  
Data Analyst - Underwriter



**Scott Sorenson**  
Specialty Policies Coordinator

Accounting

*We account for every penny – coming in and going out. We take our fiduciary responsibly seriously. We have layers of controls to protect your assets. We work together to cut costs and stretch every dollar.*



**Jody Pettet**  
Accounting Manager



**Gary Eyre**  
Accounting Technician,  
Receivables



**Megan Van Gundy**  
Accounting Technician,  
Payables

**The achievements of an organization are the results of the combined effort of each individual.**

– Vince Lombardi

Marketing Team



**Ryan Hatch**  
Manager



**Greg Baumgartner**  
Account Executive



**Josh McKell**  
Account Executive



**Darin Palmer**  
Account Executive



**Curtis Tonks**  
Account Executive

*Why Risk Pools? Simply: Broad Coverage, Ownership, Dividends, Premium Stability, Custom Loss Prevention, and Claims Support. Today, more than 85% of governments place their insurance through Risk Pools. We make it simple for you to see and evaluate options.*

Claims

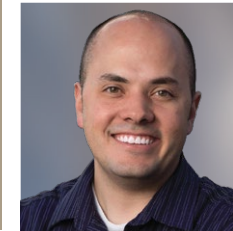
*Our seasoned claims professionals deliver high quality, personalized claims adjusting. We keep you informed as we work towards equitable resolution.*



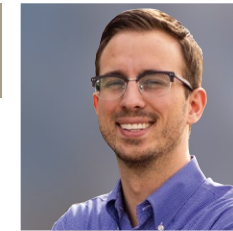
**Chris Rozelle**  
Claims Manager

Technical Services

*Managing your insurance is easy with the Trust – just click. Your policy documents and renewal applications are on the myTRUST member web portal. Our Technical Services Team leverages technology for our members and staff.*



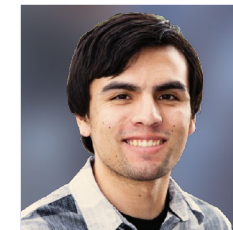
**Brady Loveland**  
Technical Services Manager



**Mark Haslam**  
Software Engineer



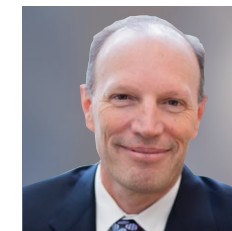
**Jill Johnson**  
Member Services Ambassador



**Brody Shiba**  
Software Engineer

Legal

*No one really likes to think about lawyers, let alone talk to them ...until they need one. The Trust not only has top-flight claims processing resources, but when our members need it most, the Trust retains the best legal minds to defend its Members. You still may not want to talk to the lawyers, but you'll sleep better knowing they're on your team.*



**A. Craig Hale**  
General Counsel

**The strength of the team is each individual member. The strength of each member is the team.**

– Phil Jackson



## 227 Cities &amp; Towns

**A**

ALPINE  
ALTA  
ALTAMONT  
ALTON  
AMALGA  
ANNABELLA  
ANTIMONY  
APPLE VALLEY  
AURORA

**B**

BALLARD  
BEAR RIVER  
BICKNELL  
BLANDING  
BLUFF  
BLUFFDALE  
BRIAN HEAD  
BRIGHTON  
BRYCE CANYON

**C**

CANNONVILLE  
CASTLE DALE  
CASTLE VALLEY  
CEDAR FORT  
CEDAR HIGHLANDS  
CENTERFIELD  
CENTERVILLE  
CENTRAL VALLEY  
CHARLESTON

CIRCLEVILLE

CLARKSTON

CLAWSON

CLEVELAND

CLINTON

COALVILLE

COPPERTON METRO

CORINNE

CORNISH

COTTONWOOD HEIGHTS

**D**

DANIEL

DELTA

DEWEYVILLE

DUCHESNE

DUTCH JOHN

**E**

EAGLE MOUNTAIN

EAST CARBON

ELK RIDGE

ELMO

ELSINORE

ELWOOD

EMERY

EMIGRATION CANYON METRO

ENOCH

ENTERPRISE

EPHRAIM

ESCALANTE

EUREKA

**F**

FAIRFIELD

FAIRVIEW

FARMINGTON

FARR WEST

FAYETTE

FERRON

FIELDING

FILLMORE

FOUNTAIN GREEN

FRANCIS

FRUIT HEIGHTS

**G**

GARDEN CITY

GARLAND

GENOLA

GLENDALE

GLENWOOD

GOSHEN

GRANTSVILLE

GREEN RIVER

GUNNISON

**H**

HANKSVILLE

HARRISVILLE

HATCH

HEBER

HELPER

HENEFER

HENRIEVILLE

HERRIMAN

HIDEOUT

HIGHLAND

HINCKLEY

HOLDEN

HOLLADAY

HONEYVILLE

HOOPER

HOWELL

HUNTINGTON

HUNTSVILLE

HURRICANE

HYDE PARK

HYRUM

**I**

INDEPENDENCE

INTERLAKEN

IVINS

**J**

JOSEPH

JUNCTION

**K**

KAMAS

KANAB

KANARRAVILLE

KANOSH

KAYSVILLE

KEARNS METRO

KINGSTON

KOOSHAREM

**L**

LAKETOWN

LAVERKIN

LEAMINGTON

LEEDS

LEHI

LEVAN

LEWISTON

LINDON

LOGAN

LYMAN

LYNNDYL

**M**

MAGNA METRO TOWNSHIP

MANILA

MANTI

MANTUA

MAPLETON

MARRIOTT-SLATERVILLE

MARYSVALE

MAYFIELD

MENDON

MIDVALE

MIDWAY

MILFORD

MILLCREEK

MILLVILLE

MINERSVILLE

MOAB

MONA

MONROE

MONTICELLO

MORGAN

MORONI

MT. PLEASANT

MYTON

**N**

NAPLES

NEPHI

NEW HARMONY

NEWTON

NIBLEY

NORTH LOGAN

NORTH SALT LAKE

**O**

OAK

OAKLEY

ORANGEVILLE

ORDERVILLE

**P**

PANGUITCH

PARADISE

PARAGONAH

PAROWAN

PAYSON

PERRY

PLAIN

PLEASANT GROVE

PLEASANT VIEW

PLYMOUTH

PORTAGE

PRICE CITY MUNICIPAL

PROVIDENCE

**R**

RANDOLPH  
 REDMOND  
 RICHFIELD  
 RICHMOND  
 RIVER HEIGHTS  
 RIVERDALE  
 RIVERTON  
 ROCKVILLE  
 ROCKY RIDGE  
 ROOSEVELT  
 ROY  
 RUSH VALLEY

**S**

SALEM  
 SALINA  
 SANDY  
 SANTA CLARA  
 SANTAQUIN  
 SARATOGA SPRINGS  
 SCIPIO  
 SCOFIELD  
 SIGURD  
 SMITHFIELD  
 SNOWVILLE  
 SOUTH OGDEN  
 SOUTH WEBER  
 SPANISH FORK  
 SPRING  
 SPRINGDALE  
 SPRINGVILLE  
 ST. GEORGE  
 STERLING  
 STOCKTON  
 SUNSET CITY

**T**

TABIONA  
 TAYLORSVILLE  
 TOOEELE  
 TOQUERVILLE  
 TORREY  
 TREMONTON  
 TRENTON  
 TROPIC

**U**

UINTAH

**V**

VERNAL  
 VERNON  
 VINEYARD  
 VIRGIN

**W**

WALES  
 WASHINGTON  
 WASHINGTON TERRACE  
 WELLINGTON  
 WELLSVILLE  
 WENDOVER  
 WEST BOUNTIFUL  
 WEST HAVEN  
 WEST POINT  
 WHITE CITY METRO TOWNSHIP  
 WILLARD  
 WOODLAND HILLS  
 WOODRUFF  
 WOODS CROSS

10 Counties

**C**

CACHE  
 CARBON

**E**

EMERY

**G**

GRAND

**S**

SAN JUAN  
 SUMMIT

**T**

TOOELE

**U**

UTAH

**W**

WASATCH  
 WAYNE

310 Local and Special Service Districts

**A**

ANGELL SPRINGS SSD  
 ASH CREEK SSD  
 ASHLEY VALLEY SEWER  
 ASHLEY VALLEY WATER/SEWER

**B**

BALLARD WATER  
 IMPROVEMENT  
 BEAR LAKE SSD  
 BEAR RIVER ASSOCIATION  
 OF GOVERNMENTS  
 BEAR RIVER COMMISSION  
 BEAR RIVER HEALTH  
 DEPARTMENT  
 BEAR RIVER MENTAL  
 HEALTH SERVICES  
 BEAR RIVER WATER  
 CONSERVANCY

BEAVER CITY HOUSING  
 AUTHORITY

BEN LOMOND CEMETERY  
 MAINTENANCE

BENCHLAND WATER

BENSON CULINARY  
 WATER IMPROVEMENT

BIG COTTONWOOD CANYON  
 IMPROVEMENT

BIG PLAINS WATER/SEWER

BLANDING CEMETERY  
 MAINTENANCE

BLUFF SERVICE AREA

BLUFF WATER WORKS SSD

BONA VISTA WATER  
 IMPROVEMENT

BOX ELDER COUNTY / PERRY  
 CITY FLOOD CONTROL &  
 DRAINAGE

BOX ELDER COUNTY / WILLARD  
 CITY FLOOD CONTROL

BOX ELDER COUNTY SSD #1

BOX ELDER MOSQUITO

BRIDGERLAND COMMUNITY  
 ICE ARENA

BUILDING AUTHORITY OF KANE  
 COUNTY WATER CONSERVANCY

**C**

CACHE COUNTY EMS  
 AUTHORITY

CACHE METRO PLANNING

CACHE MOSQUITO

CACHE VALLEY TRANSIT

CACHE WATER

CANYONLANDS HEALTH CARE

CARBON COUNTY RECREATION  
 / TRANSPORTATION LOCAL  
 BUILDING AUTHORITY

CARBON COUNTY RECREATION  
 AND TRANSPORTATION SSD

CARBON WATER CONSERVANCY

CASTLE DALE BUILDING  
 COMMISSION

CASTLE VALLEY SSD

CEDAR CITY HOUSING  
 AUTHORITY

CEDARVIEW - MONTWELL SSD

CENTRAL BOX ELDER FIRE SSD

CENTRAL DAVIS SEWER

CENTRAL IRON COUNTY WATER  
 CONSERVANCY

CENTRAL UTAH 911

CENTRAL UTAH  
 COUNSELING CENTER

CENTRAL UTAH PUBLIC  
 HEALTH DEPARTMENT

CENTRAL WASATCH  
 COMMISSION

CHURCH WELLS SSD

COLLEGE-YOUNG MOSQUITO

CORINNE CEMETERY  
 MAINTENANCE

CORINNE DRAINAGE #1

COTTONWOOD HEIGHTS PARKS  
 & RECREATION SERVICE AREA

COTTONWOOD IMPROVEMENT

COUNCIL ON AGING - GOLDEN  
 AGE CENTER

CRESCENT CEMETERY  
 MAINTENANCE

**D**

DAGGETT COUNTY MOSQUITO

DAGGETT WATER

DAMMERON VALLEY FIRE SSD

DAVIS & WEBER COUNTIES  
 CANAL COMPANY

DAVIS - SALT LAKE AERIAL  
 SPRAY AUTHORITY

DAVIS COMMUNITY  
 HOUSING AUTHORITY

DESERET-OASIS SSD

DIAMOND VALLEY FIRE SSD

DIXIE DEER SSD

DUCHESNE CONSERVATION

DUCHESNE COUNTY WATER  
 CONSERVANCY

**E**

EAST DUCHESNE CULINARY WATER IMPROVEMENT  
 EAST ZION SSD  
 EASTLAND SSD  
 EDEN PARK SERVICE  
 ELK MEADOWS SSD  
 EMERY COUNTY CARE & REHABILITATION CENTER  
 EMERY COUNTY FIRE PROTECTION  
 EMERY COUNTY RECREATION  
 EMERY COUNTY SSD #1  
 EMERY WATER CONSERVANCY  
 EMIGRATION IMPROVEMENT  
 ENTERPRISE VALLEY MEDICAL CLINIC  
 EPHRAIM AMBULANCE ASSOCIATION

**F**

FIELDING CEMETERY MAINTENANCE  
 FIVE COUNTY ASSOCIATION OF GOVERNMENTS  
 FLAMING GORGE ROAD AND TRANSPORTATION SSD  
 FOUR CORNERS COMMUNITY BEHAVIORAL HEALTH, INC.  
 FREEDOM PREPARATORY ACADEMY  
 FRUITLAND SSD

**G**

GARDEN CITY CEMETERY MAINTENANCE  
 GARDEN CITY FIRE  
 GRAND CONSERVATION  
 GRAND COUNTY CEMETERY MAINTENANCE

GRAND COUNTY RECREATION  
 GRAND COUNTY TRANSPORTATION  
 GRAND WATER & SEWER SERVICE AGENCY  
 GRANGER HUNTER IMPROVEMENT  
 GRANTSVILLE CONSERVATION  
 GREATER SALT LAKE MUNICIPAL SERVICES  
 GREEN HILLS WATER / SEWER  
 GREEN RIVER CONSERVATION  
 GROUSE CREEK SOLID WASTE  
 GROUSE CREEK SSD  
 GUNLOCK SSD  
 GUNNISON VALLEY POLICE DEPARTMENT  
 GUNNISON VALLEY RECREATION

**H**

HANNA WATER & SEWER  
 HEBER VALLEY SSD  
 HOOPER WATER IMPROVEMENT  
 HOUSING AUTHORITY OF CARBON COUNTY  
 HOUSING AUTHORITY OF SALT LAKE CITY  
 HOUSING AUTHORITY OF SOUTHEASTERN UTAH  
 HOUSING AUTHORITY OF UTAH COUNTY  
 HOUSING CONNECT  
 HURRICANE REDEVELOPMENT AGENCY  
 HYDE PARK CEMETERY

**I**

INDIAN RIDGE WATER CONSERVANCY  
 INTERMOUNTAIN POWER

**J**

JENSEN WATER IMPROVEMENT  
 JOHNSON WATER IMPROVEMENT  
 JORDAN RIVER COMMISSION

**K**

KANE COUNTY TASK FORCE  
 KANE COUNTY WATER CONSERVANCY  
 KEARNS IMPROVEMENT

**L**

LA SAL RECREATION  
 LAKE POINT CEMETERY & PARKS SERVICE AREA  
 LAKE POINT IMPROVEMENT  
 LITTLE MOUNTAIN SERVICE AREA  
 LOCAL BUILDING AUTHORITY OF BLUFFDALE CITY  
 LONE PEAK PUBLIC SAFETY  
 LONG VALLEY SEWER IMPROVEMENT

**M**

MAESER WATER IMPROVEMENT  
 MAGNA MOSQUITO  
 MANTI AMBULANCE ASSOCIATION  
 METRO FIRE AGENCY  
 MEXICAN HAT SSD  
 MIDVALLEY IMPROVEMENT

MIDWAY SANITATION  
 MILITARY INSTALLATION DEVELOPMENT AUTHORITY  
 MILLARD CONSERVATION  
 MILLARD COUNTY WATER CONSERVANCY  
 MOAB MOSQUITO  
 MOAB VALLEY FIRE PROTECTION

MORGAN CITY REDEVELOPMENT AGENCY

MORGAN CONSERVATION

MOSQUITO ABATEMENT - DAVIS

MOUNTAIN GREEN FIRE PROTECTION

MOUNTAIN GREEN SEWER IMPROVEMENT

MOUNTAIN MEADOW SSD

MOUNTAIN REGIONAL WATER

MOUNTAINLAND ASSOCIATION OF GOVERNMENTS

MT. OLYMPUS IMPROVEMENT

MUNICIPAL BUILDING AUTHORITY OF VERNAL CITY

MUTTON HOLLOW IMPROVEMENT

MYTON CITY HOUSING AUTHORITY

**N**

NEOLA COMMUNITY PARK SSD  
 NEOLA WATER & SEWER  
 NEW HARMONY VALLEY SSD  
 NORTH DAVIS SEWER  
 NORTH FORK SSD  
 NORTH PARK POLICE AGENCY  
 NORTH POINTE SOLID WASTE  
 NORTH SANPETE AMBULANCE  
 NORTH SEVIER RECREATION

NORTH SUMMIT FIRE PROTECTION  
 NORTH SUMMIT RECREATION  
 NORTH TOOELE SSD  
 NORTH UTAH VALLEY ANIMAL SERVICES SSD  
 NORTH VIEW FIRE

**O**

OGDEN HOUSING AUTHORITY  
 OGDEN PREPARATORY ACADEMY  
 OGDEN VALLEY PARKS SERVICE AREA  
 OGDEN VALLEY RECREATION / TRANSMISSION SSD  
 OQUIRRH MOUNTAIN WATER COMPANY  
 OQUIRRH RECREATION & PARKS  
 OGDEN-WEBER TECHNOLOGY COLLEGE

**P**

PARK CITY FIRE SERVICE  
 PAUNSAUGUNT CLIFFS SSD  
 PEOA RECREATION SSD  
 PERRY - WILLARD WASTEWATER TREATMENT PLANT  
 PINE MEADOW MUTUAL WATER COMPANY  
 PINE VALLEY LOCAL ADMINISTRATIVE  
 PINE VALLEY SSD  
 PINON FOREST SSD  
 PIONEER SSD  
 PLEASANT GROVE METROPOLITAN WATER  
 POINT OF THE MOUNTAIN

STATE LAND AUTHORITY  
 PRICE RIVER WATER IMPROVEMENT  
 PRICE RIVER WATERSHED CONSERVATION  
 PROVO CITY HOUSING AUTHORITY  
 PROVO METROPOLITAN WATER

**R**

RANDOLPH FIRE  
 RICHMOND CEMETERY MAINTENANCE  
 RIVERSIDE CEMETERY MAINTENANCE  
 RIVERSIDE COMMUNITY SSD  
 ROOSEVELT CITY HOUSING AUTHORITY  
 ROY WATER CONSERVANCY  
 RURAL WATER ASSOCIATION OF UTAH  
 RUSH VALLEY WATER CONSERVANCY

**S**

SALT LAKE CITY MOSQUITO  
 SALT LAKE CONSERVATION  
 SALT LAKE COUNTY SERVICE AREA #3  
 SALT LAKE URBAN SEARCH & RESCUE  
 SAN JUAN CONSERVATION  
 SAN JUAN COUNTY TRANSPORTATION  
 SAN JUAN COUNTY WATER CONSERVANCY  
 SAN JUAN MENTAL HEALTH / SUBSTANCE ABUSE SSD  
 SAN RAFAEL CONSERVATION

SANDY SUBURBAN IMPROVEMENT  
 SANPETE COUNTY FIRE SSD  
 SCOFIELD RESERVOIR SSD  
 SEVIER COUNTY SSD #1  
 SIX COUNTY ASSOCIATION OF GOVERNMENTS  
 SKYLINE MOUNTAIN SSD  
 SNYDERVILLE BASIN SPECIAL RECREATION  
 SNYDERVILLE BASIN WATER RECLAMATION  
 SOLID WASTE SSD #1  
 SOUTH DAVIS SEWER  
 SOUTH DAVIS WATER  
 SOUTH SALT LAKE VALLEY MOSQUITO  
 SOUTH SUMMIT CEMETERY MAINTENANCE  
 SOUTH UTAH VALLEY ANIMAL SERVICES SSD  
 SOUTH UTAH VALLEY ELECTRIC SERVICE  
 SOUTH VALLEY SEWER  
 SOUTH VALLEY WATER RECLAMATION FACILITY  
 SOUTH WEBER WATER IMPROVEMENT  
 SOUTHEASTERN UTAH ASSOCIATION OF LOCAL GOVERNMENTS  
 SOUTHERN UTAH VALLEY POWER SYSTEMS  
 SOUTHWEST BEHAVIORAL HEALTH CENTER  
 SOUTHWEST MOSQUITO & CONTROL  
 SOUTHWESTERN SSD  
 ST. GEORGE HOUSING AUTHORITY

STANSBURY PARK IMPROVEMENT  
 STANSBURY SERVICE AGENCY  
 SUGAR HOUSE PARK AUTHORITY  
 SUMMIT COUNTY SERVICE AREA #3  
 SUMMIT MOSQUITO

**T**

TABBY VALLEY PARKS & RECREATION  
 TAYLOR WEST WEBER WATER IMPROVEMENT  
 TEASDALE SSD  
 THATCHER-PENROSE FIRE DEPARTMENT  
 THOMPSON SSD  
 THOMPSON SPRINGS SPECIAL SERVICE FIRE  
 TICABOO UTILITY IMPROVEMENT  
 TIMBER LAKES WATER SSD  
 TIMBERLINE SSD  
 TOOEE COUNTY HOUSING AUTHORITY  
 TOOEE VALLEY MOSQUITO  
 TRANS-JORDAN CITIES  
 TREMONTON-GARLAND DRAINAGE  
 TRIDELL-LAPOINT WATER IMPROVEMENT  
 TROPIC CEMETERY MAINTENANCE

**U**

UINTAH ANIMAL CONTROL & SHELTER  
 UINTAH BASIN ASSISTANCE COUNCIL  
 UINTAH BASIN ASSOCIATION OF GOVERNMENTS

UINTAH BASIN NARCOTICS STRIKE FORCE  
 UINTAH CARE CENTER  
 UINTAH FIRE SUPPRESSION  
 UINTAH HEALTH CARE  
 UINTAH HIGHLANDS IMPROVEMENT  
 UINTAH IMPACT MITIGATION  
 UINTAH MOSQUITO  
 UINTAH RECREATION  
 UINTAH TRANSPORTATION SSD  
 UINTAH WATER CONSERVANCY  
 UNIFIED FIRE AUTHORITY  
 UPPER COUNTRY WATER IMPROVEMENT  
 UTAH ASSOCIATION OF CONSERVATION SERVICE DISTRICTS  
 UTAH ASSOCIATION OF SPECIAL SERVICE DISTRICTS  
 UTAH CHIEFS OF POLICE ASSOCIATION  
 UTAH COMMUNICATIONS AUTHORITY  
 UTAH INLAND PORT AUTHORITY  
 UTAH LEAGUE OF CITIES AND TOWNS  
 UTAH LOCAL GOVERNMENTS TRUST  
 UTAH LOCAL GOVERNMENTS TRUST BOARD  
 UTAH MUNICIPAL CLERKS ASSOCIATION  
 UTAH MUNICIPAL POWER AGENCY  
 UTAH TRANSIT AUTHORITY  
 UTOPIA

**V**

VERNON WATER WORKS

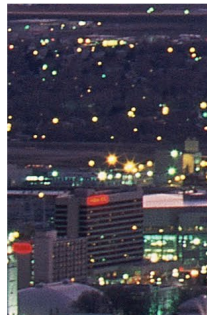
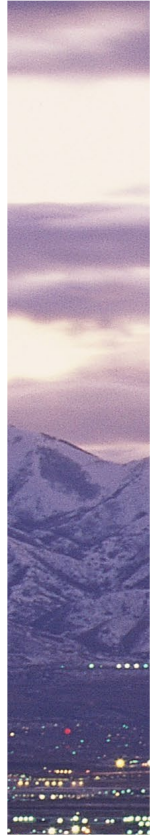
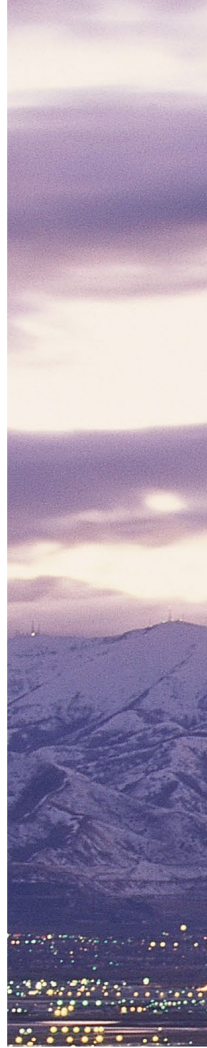
**W**

WANSHIP CEMETERY MAINTENANCE  
 WARREN / WEST WARREN WATER IMPROVEMENT  
 WASATCH COUNTY CONSERVATION  
 WASATCH COUNTY FIRE PROTECTION SSD  
 WASATCH FRONT REGIONAL COUNCIL  
 WASATCH FRONT WASTE & RECYCLING  
 WASATCH INTEGRATED WASTE MANAGEMENT  
 WASATCH MENTAL HEALTH SERVICES SSD  
 WASHINGTON COUNTY FLOOD CONTROL AUTHORITY  
 WASHINGTON COUNTY SOLID WASTE SSD #1  
 WASHINGTON COUNTY WATER CONSERVANCY  
 WASTE MANAGEMENT SSD #5  
 WAYNE COMMUNITY HEALTH CENTER  
 WEBER / MORGAN NARCOTICS STRIKE FORCE  
 WEBER BASIN WATER CONSERVANCY  
 WEBER CONSERVATION  
 WEBER FIRE  
 WEBER HOUSING AUTHORITY  
 WEBER MOSQUITO  
 WEST CORINNE WATER COMPANY

WEST HAVEN SSD  
 WEST MILLARD MOSQUITO  
 WEST WARREN COMMUNITY PARK  
 WESTERN KANE COUNTY SSD #1  
 WESTERN STATES WATER COUNCIL  
 WESTERN UINTAH BASIN MOSQUITO  
 WHITE CITY WATER IMPROVEMENT  
 WHITE HILLS SSD  
 WOLF CREEK WATER / SEWER IMPROVEMENT  
 WOMEN OF WATER  
 WOODRUFF CEMETERY MAINTENANCE  
 WOODRUFF FIRE  
 WOODS CROSS CITY REDEVELOPMENT AGENCY

**Coming together is a beginning.  
 Keeping together is progress.  
 Working together is success.**

– Henry Ford



**Alone we can  
do so little,  
together we can  
do so much.**

– Helen Keller

55 South Highway 89  
North Salt Lake, UT 84054  
tel: 801.936.6400  
toll: 800.748.4440

**[www.utahtrust.gov](http://www.utahtrust.gov)**