



TRUST

UTAH LOCAL GOVERNMENTS TRUST

2018 ANNUAL REPORT

The Trust is **Partner of Choice for 71%** **of Utah's Local Governments,** with **99.8% Member Retention**

CEO'S MESSAGE



The year 2018 was yet another record-breaking year for the Utah Local Governments Trust.

After pouring over options, 31 new members joined our pooled programs. Dozens of members bid out their insurance – not surprisingly, 99.8% renewed their partnership with the Trust. We continue to expand coverage and cut rates. Our size and scale, people and partnerships, and management philosophy make this possible.

In 2018 our Board of Directors authorized \$2,000,000 in premium relief credits and further rate reductions. The Trust now protects more than \$5,000,000,000 in member assets and hundreds of millions in liability risks. In 2018 we paid \$21,692,079 in claims and expenses. We strengthened our net position by \$4,492,590. This added security protects members from the storms of today and tomorrow.

Since 1974, the Trust has provided specialized insurance products and services to Utah's local governments. Today, the Trust has insuring relationships with 538 members: 92% of Utah's Cities and Towns; 66% of Utah's Special Districts, and 34% of Utah's Counties. We compete directly with the commercial market and other insurance providers. We deliver what others cannot. We are Best in Class.

Our philosophy is simple. We listen, we respond, and we deliver measurable results. Our team and our members are first rate. We will continue to lead with innovation, accountability, and discipline – course correcting along the way.

Thank you for your confidence in the Trust. It's our privilege to serve you.

A handwritten signature in black ink that reads "Steven A. Hansen". The signature is fluid and cursive, written in a professional style.

STEVEN A. HANSEN
CEO, Utah Local Governments Trust

Leaders establish trust with candor, transparency, and credit.

– Jack Welch, Former CEO of General Electric



GARY L. HATCH

BOARD CHAIR
EXECUTIVE COMMITTEE
Manager, Davis County
Mosquito Abatement District

TODD S. BEUTLER

EXECUTIVE COMMITTEE
General Manager,
Cache Valley Transit District

CRAIG W. BUTTARS

EXECUTIVE COMMITTEE
Executive, Cache County

STEPHANIE L. MILLER

EXECUTIVE COMMITTEE
Mayor, Hyrum City



ROBERT M. HALE

Mayor,
Midvale City

SHAWN B. MILNE

Commissioner,
Tooele County

KENNETH F. NEILSON

Mayor,
Washington City

JOE L. PICCOLO

APPOINTED

BRADLEY M. POWELL

General Manager,
Midvalley
Improvement
District

PAMELA A. ROBERTS

APPOINTED
Executive Director,
Wasatch Front
Waste & Recycling
District

CHRISTOPHER F. ROBINSON

Council Member,
Summit County

JOANN B. SEGhini

APPOINTED

Today, the Trust has insuring relationships with **538 members:**
92% of Utah's Cities and Towns, **66%** of Utah's Local and
 Special Service Districts, and **34%** of Utah's Counties.

Strong financial performance is the by-product of member focus
 and teamwork. If results are better than actuarial projections,
 members reap the reward through dividends, premium subsidies,
 more coverage for less premium, and increased financial security.

ASSETS	2018	2017
CURRENT ASSETS:		
Cash	\$ 273,616	\$ 78,129
Investment in State of Utah Public Treasurers' Investment Fund	16,132,317	36,819,599
Receivables:		
<i>Premiums</i>	887,372	434,491
<i>Investment income</i>	439,931	283,144
<i>Administrative fees</i>	115,247	69,316
<i>Reinsurance recoverable on paid claims</i>	5,920,107	4,572,729
<i>Other</i>	19,128	83,516
Prepaid expenses	1,003,562	903,352
TOTAL CURRENT ASSETS	\$ 24,791,280	\$ 43,244,276
NON-CURRENT ASSETS:		
Investment in debt securities	78,173,912	49,667,269
Restricted investment in debt securities held by State Treasurer	5,970,724	5,985,283
Capital assets	6,322,813	6,482,816
Deposit with Constitution State Services LLC	112,552	112,552
Deposit with NLC Mutual Insurance Company	525,295	525,295
TOTAL NON-CURRENT ASSETS	\$ 91,105,296	\$ 62,773,215
TOTAL ASSETS	\$ 115,896,576	\$ 106,017,491
DEFERRED OUTFLOWS OF RESOURCES	2018	2017
RELATED TO PENSIONS	\$ 520,636	\$ 633,480

LIABILITIES	2018	2017
CURRENT LIABILITIES:		
Current portion of estimated unpaid claims and claims adjustment expenses	\$ 16,786,112	\$ 15,157,221
Trust premium relief credit liability	1,954,352	977,565
Unearned premiums	7,904,236	7,764,957
Accounts payable and accrued expenses	906,165	833,525
State premium tax payable	215,379	490,547
TOTAL CURRENT LIABILITIES	\$ 27,766,244	\$ 25,223,815
NON-CURRENT LIABILITIES:		
Net pension liability	617,976	912,953
Total OPEB obligation	431,586	401,361
Estimated unpaid claims and claims adjustment expenses, net of current portion	23,529,043	20,678,909
TOTAL NON-CURRENT LIABILITIES	\$ 24,578,605	\$ 21,993,223
TOTAL LIABILITIES	\$ 52,344,849	\$ 47,217,038
DEFERRED INFLOWS OF RESOURCES	2018	2017
RELATED TO PENSIONS	\$ 306,297	\$ 160,457
NET POSITION	2018	2017
Invested in capital assets	6,322,813	6,482,816
Unrestricted	57,443,253	52,790,660
TOTAL NET POSITION	\$ 63,766,066	\$ 59,273,476

REVENUES & EXPENSES	2018	2017
OPERATING REVENUES:		
Gross premiums earned	\$ 30,230,658	\$ 28,714,606
Trust premium relief credit	(1,954,352)	(999,809)
Reinsurance premiums	(4,879,601)	(3,884,980)
NET PREMIUMS EARNED	\$ 23,396,705	\$ 23,829,817
Administrative fees	687,066	682,088
Other revenue	14,978	15,151
TOTAL OPERATING REVENUES	\$ 24,098,749	\$ 24,527,056
OPERATING EXPENSES:		
Claims and claims adjustment expenses	16,297,469	14,375,723
State premium tax expense	603,413	634,076
General and administrative expenses	4,791,197	4,635,834
TOTAL OPERATING EXPENSES	\$ 21,692,079	\$ 19,645,633
OPERATING INCOME	\$ 2,406,670	\$ 4,881,423
NONOPERATING REVENUES (EXPENSES):		
Investment income	2,704,084	1,891,949
Change in fair value of investments	(618,164)	(76,374)
TOTAL NONOPERATING REVENUES (EXPENSES)	\$ 2,085,920	\$ 1,815,575
CHANGE IN NET POSITION	\$ 4,492,590	\$ 6,696,998
NET POSITION AT BEGINNING OF YEAR	\$ 59,273,476	\$ 52,576,478
NET POSITION AT END OF YEAR	\$ 63,766,066	\$ 59,273,476

We honor our fiduciary responsibility - financial strength guarantees our ability to deliver on our promises in times of need. The financial statements shown are derived from the Trust's audited financial statements for 2018 and do not include notes. A copy of the complete audited financial statements can be obtained from the Trust upon request.

JOHN GULDNER	<i>Alta, Town Administrator</i>	DALE COULAM	<i>Ivins, City Manager/Attorney</i>	RYAN CARTER	<i>Riverton, City Attorney</i>	MARILYN GILLETTE	<i>Tooele County, Clerk/Auditor</i>
DAVE HATCH	<i>Ashley Valley Water & Sewer Improvement District, District Manager</i>	SHAYNE SCOTT	<i>Kaysville, City Manager</i>	RYAN SNOW	<i>Roosevelt, City Manager</i>	SHAWN MILNE	<i>Tooele County, County Commissioner</i>
TODD BARSON	<i>Bear River Health Department, Deputy Director</i>	KATIE WITT	<i>Kaysville, Mayor</i>	JERRY KNIGHT	<i>Sandy Suburban Improvement District, General Manager</i>	KENDALL THOMAS	<i>Tooele County, County Commissioner</i>
MARK REID	<i>Bluffdale, City Manager</i>	PAM GILL	<i>Kearns Improvement District, General Manager</i>	ED DICKIE	<i>Santa Clara, City Manager</i>	SHAWN WARNKE	<i>Tremonton, City Manager</i>
BRET HOWSER	<i>Brian Head, Town Manager</i>	JASON WALKER	<i>Lehi, City Administrator</i>	BEN REEVES	<i>Santaquin, City Manager</i>	ROBIN O'DRISCOLL	<i>Utah Recreation District, Executive Director</i>
AMY ADAMS	<i>Cache County, HR Director</i>	ADAM COWIE	<i>Lindon, City Administrator</i>	MARK CHRISTENSEN	<i>Saratoga Springs, City Manager</i>	LEGRAND BITTER	<i>Utah Association of Special Districts, Executive Director</i>
TODD BEUTLER	<i>Cache Valley Transit District, General Manager</i>	KYMBER HOUSLEY	<i>Logan, City Attorney</i>	CRAIG GILES	<i>Smithfield, City Manager</i>	DAVE SHAWCROFT	<i>Utah County, Civil Division Chief</i>
SETH MARSING	<i>Carbon County, Clerk/Auditor</i>	KENT BARTON	<i>Manti, City Administrator</i>	MIKE LUERS	<i>Snyderville Basin Water Reclamation District, General Manager</i>	CAMERON DIEHL	<i>Utah League of Cities and Towns, Executive Director</i>
DENNIS CLUFF	<i>Clinton, City Manager</i>	KANE LOADER	<i>Midvale, City Manager</i>	MATT DIXON	<i>South Ogden, City Manager</i>	QUINN BENNION	<i>Vernal, City Manager</i>
TIM TINGEY	<i>Cottonwood Heights, City Manager</i>	BRAD POWELL	<i>Midvalley Improvement District, General Manager</i>	CRAIG WHITE	<i>South Valley Sewer District, General Manager</i>	PAM ROBERTS	<i>Wasatch Front Waste & Recycling District, Executive Director</i>
BEN HILL	<i>Cottonwood Heights Parks and Recreation Service Area, Director</i>	DAVID EVERITT	<i>Moab, City Manager</i>	LEE RAWLINGS	<i>South Valley Water Reclamation Facility, General Manager</i>	NATHAN RICH	<i>Wasatch Integrated Waste Management District, Executive Director</i>
IFO PILI	<i>Eagle Mountain, City Administrator</i>	TY BAILEY	<i>Morgan, City Manager</i>	TROY FITZGERALD	<i>Springville, City Administrator</i>	JUERGEN KORBANKA	<i>Wasatch Mental Health Services SSD, Executive Director</i>
ROB DOTSON	<i>Enoch, City Manager</i>	SETH ATKINSON	<i>Nephi, City Administrator</i>	SHAWN GUZMAN	<i>St. George, City Attorney</i>	ROGER CARTER	<i>Washington, City Manager</i>
ADAM BOWLER	<i>Enterprise, City Administrator</i>	DAVID ZOOK	<i>Nibley, City Manager</i>	TOM FISHER	<i>Summit County, County Manager</i>	TOM HANSON	<i>Washington Terrace, City Manager</i>
BRANT HANSON	<i>Ephraim, City Manager</i>	ALAN LUCE	<i>North Logan, City Manager</i>	JOHN TAYLOR	<i>Taylorsville, City Administrator</i>	KYLE LAWS	<i>West Point, City Manager</i>
BRANDON GREEN	<i>Fruit Heights, City Manager</i>	RODGER HARPER	<i>North Pointe Solid Waste SSD, District Manager</i>	ROGER BAKER	<i>Tooele, City Attorney</i>	GARY URESK	<i>Woods Cross, City Administrator</i>
BRENT MARSHALL	<i>Grantsville, Mayor</i>	KEN LEETHAM	<i>North Salt Lake, City Manager</i>	DEBBIE WINN	<i>Tooele, Mayor</i>		
DENNIS GUNN	<i>Heber, City Manager</i>	LORI TALBOT	<i>Panguitch, City Manager</i>	SCOTT BROADHEAD	<i>Tooele County, County Attorney</i>		
NATHAN CRANE	<i>Highland, City Administrator</i>	CLEVE MATHESON	<i>Parowan, City Manager</i>				
KIM WILFORD	<i>Housing Authority of Salt Lake City, Operations Director</i>	DAVE TUCKETT	<i>Payson, City Manager</i>				
ANDRE BARTLOME	<i>Housing Authority of the County of Salt Lake, Director of Finance</i>	SCOTT DARRINGTON	<i>Pleasant Grove, City Administrator</i>				
LYNELL SMITH	<i>Housing Authority of Utah County, Executive Director</i>	BILL COBABE	<i>Pleasant View, City Administrator</i>				
CLARK FAWCETT	<i>Hurricane, City Manager</i>	JEFF RICHENS	<i>Price River Water Improvement District, District Manager</i>				
RON SALVESEN	<i>Hyrum, City Administrator</i>	ROBERT VERNON	<i>Provo City Housing Authority, Executive Director</i>				
		MATT CREAMER	<i>Richfield, City Administrator</i>				

Determined people working together can do anything.

– Jim Casey, Founder of UPS

LOSS PREVENTION

We help members reduce loss and injury through the Trust Accountability Program (TAP). We are Utah's preferred governmental risk pool because safety matters. Together, we protect people and financial resources.

UNDERWRITING

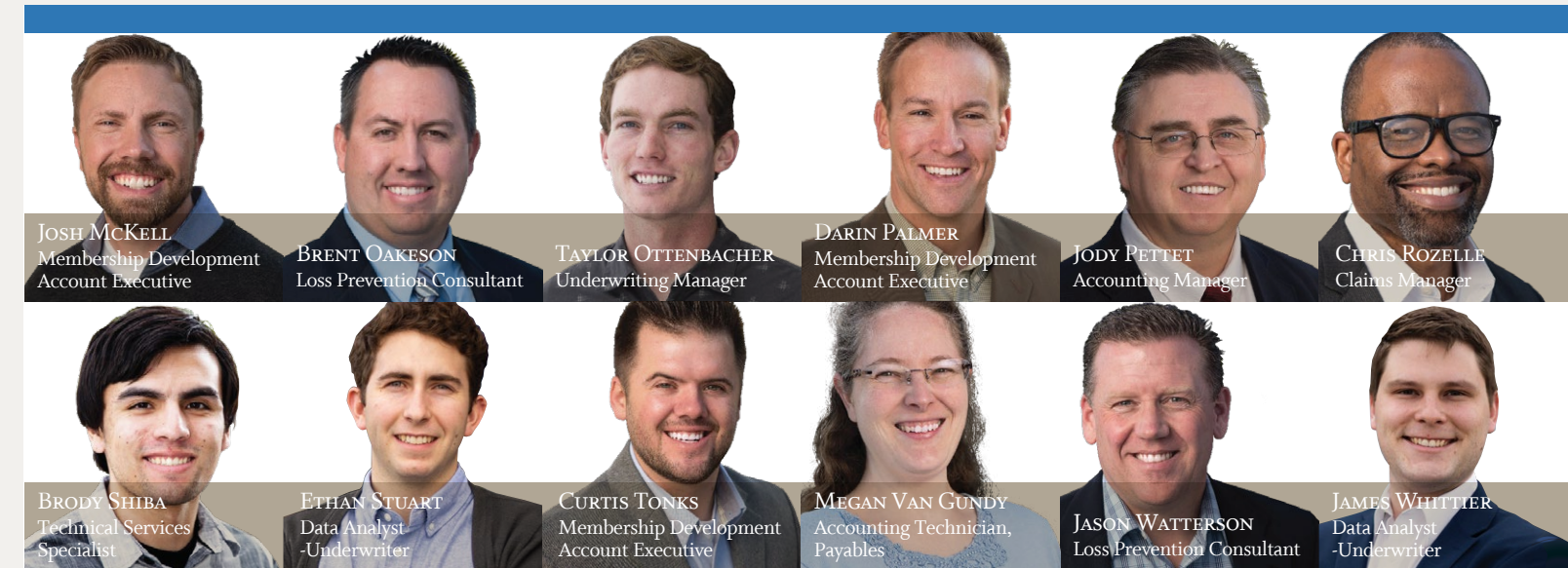
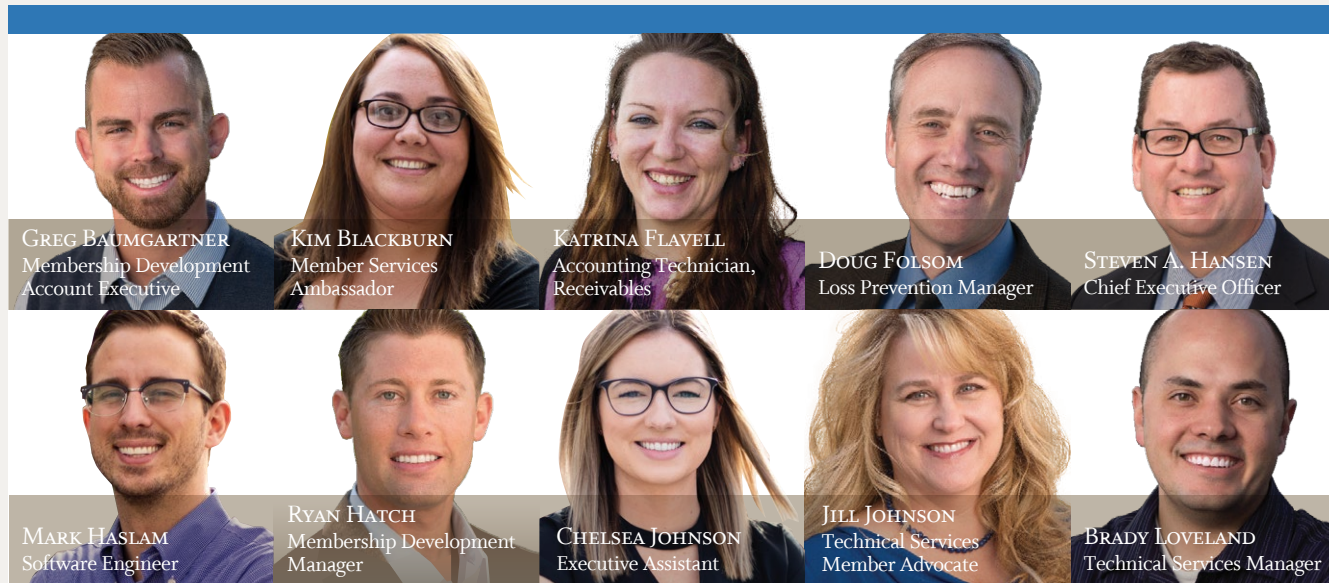
We use mathematical models and data analytics to spread the cost of risk in a fair and sustainable way. It's the law-of-large-numbers, quality partners and risks, and careful underwriting that allow us to deliver the lowest long-term cost of risk.

SALES & MARKETING

Nationally, 85% of governments buy insurance through risk pools. Here's why: coverage, financial security, risk management, and claims. We simplify insurance so you can evaluate options. In Utah, 71% of local governments chose to partner with the Trust.

ACCOUNTING

Accurate accounting and financial reporting is the backbone of the Trust. Trust auditors have reported clean or unmodified financial audit opinions for more than two decades. We follow GASB and GAAP standards to ensure accuracy and fidelity.



TECHNICAL SERVICES

We help you leverage the power of myTRUST - our new member portal. This innovative tool gives you control over policies, applications, invoicing, property schedules, and more.

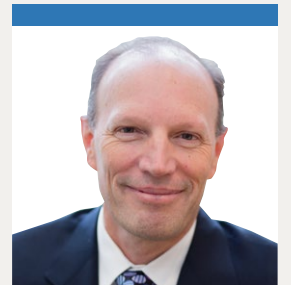
CLAIMS

When things go bad, we step in. We pay covered claims and defend our members when they need it most. We value your input and experience in helping to resolve claims.

Unfortunately, risk is an inevitable part of running an effective governmental entity. The Trust understands the unique risks faced by its members and how to help minimize them. Just as importantly, the Trust knows how to help when those risks rear their ugly heads. The Trust's professional team is focused on making sure members are covered when it matters most.

A. CRAIG HALE

GENERAL COUNSEL, Utah Local Governments Trust



227 Cities & Towns

A

ALPINE
ALTA
ALTAMONT
ALTON
AMALGA
ANNABELLA
ANTIMONY
APPLE VALLEY
AURORA

B

BALLARD
BEAR RIVER
BICKNELL
BLANDING
BLUFF
BLUFFDALE
BRIAN HEAD
BRYCE CANYON

C

CANNONVILLE
CASTLE DALE
CASTLE VALLEY
CEDAR FORT
CEDAR HIGHLANDS
CENTERFIELD
CENTERVILLE
CENTRAL VALLEY
CHARLESTON
CIRCLEVILLE

CLARKSTON

CLAWSON

CLEVELAND

CLINTON

COALVILLE

COPPERTON METRO
TOWNSHIP

CORINNE

CORNISH

COTTONWOOD HEIGHTS

D

DANIEL

DELTA

DEWEYVILLE

DUCHESNE

DUTCH JOHN

E

EAGLE MOUNTAIN

EAST CARBON

ELK RIDGE

ELMO

ELSINORE

ELWOOD

EMERY

EMIGRATION CANYON
METRO TOWNSHIP

ENOCH

ENTERPRISE

EPHRAIM

ESCALANTE

EUREKA

F

FAIRFIELD

FAIRVIEW

FARMINGTON

FARR WEST

FAYETTE

FERRON

FIELDING

FILLMORE

FOUNTAIN GREEN

FRANCIS

FRUIT HEIGHTS

G

GARDEN

GARLAND

GENOLA

GLENDALE

GLENWOOD

GOSHEN

GRANTSVILLE

GREEN RIVER

GUNNISON

H

HANKSVILLE

HARRISVILLE

HATCH

HEBER

HELPER

HENEFER

HENRIEVILLE

HERRIMAN

HIDEOUT

HIGHLAND

HINCKLEY

HOLDEN

HOLLADAY

HONEYVILLE

HOOPER

HOWELL

HUNTINGTON

HUNTSVILLE

HURRICANE

HYDE PARK

HYRUM

I

INDEPENDENCE

INTERLAKEN

IVINS

J

JOSEPH

JUNCTION

K

KAMAS

KANAB

KANARRAVILLE

KANOSH

KAYSVILLE

KEARNS METRO TOWNSHIP

KINGSTON

KOOSHAREM

L

LAKETOWN

LAVERKIN

LEAMINGTON

LEEDS

LEHI

LEVAN

LEWISTON

LINDON

LOGAN

LYMAN

LYNNDYL

M

MAGNA METRO
TOWNSHIP

MANILA

MANTI

MANTUA

MAPLETON

MARRIOTT-SLATERVILLE

MARYSVALE

MAYFIELD

MENDON

MIDVALE

MIDWAY

MILFORD

MILLCREEK

MILLVILLE

MINERSVILLE

MOAB

MONA

MONROE

MONTICELLO

MORGAN

MORONI

Mt. PLEASANT

MYTON

N

NAPLES

NEPHI

NEW HARMONY

NEWTON

NIBLEY

NORTH LOGAN

NORTH SALT LAKE

O

OAK

OAKLEY

ORANGEVILLE

ORDERVILLE

P

PANGUITCH

PARADISE

PARAGONAH

PAROWAN

PAYSON

PERRY

PLAIN

PLEASANT GROVE

PLEASANT VIEW

PLYMOUTH

PORTAGE

PRICE

PROVIDENCE

R

RANDOLPH

REDMOND

RICHFIELD

RICHMOND

RIVER HEIGHTS

RIVERDALE

RIVERTON

ROCKVILLE

ROCKY RIDGE

ROOSEVELT

ROY

RUSH VALLEY

S

SALEM

SALINA

SANDY

SANTA CLARA

SANTAQUIN

SARATOGA SPRINGS

SCIPIO

SCOFIELD

SIGURD

SMITHFIELD

SNOWVILLE

SOUTH OGDEN

SOUTH WEBER

SPANISH FORK

SPRING

SPRINGDALE

SPRINGVILLE

St. GEORGE

STERLING

STOCKTON

SUNSET

SYRACUSE

T

TABIONA

TAYLORSVILLE

TOOELE

TOQUERVILLE

TORREY

TREMONTON

TRENTON

TROPIC

U

UINTAH

V

VERNAL

VERNON

VINEYARD

VIRGIN

W

WALES

WASHINGTON

WASHINGTON TERRACE

WELLINGTON

WELLSVILLE

WENDOVER

WEST BOUNTIFUL

WEST HAVEN

WEST POINT

WHITE CITY
METRO TOWNSHIP

WILLARD

WOODLAND HILLS

WOODRUFF

WOODS CROSS

10 Counties

C

CACHE
CARBON

E

EMERY

G

GRAND

S

SAN JUAN
SUMMIT

T

TOOELE

U

UTAH

W

WASATCH
WAYNE

301 Local and Special Service Districts

A

ANGELL SPRINGS SSD
ASH CREEK SSD
ASHLEY VALLEY SEWER
ASHLEY VALLEY WATER/SEWER

B

BALLARD WATER IMPROVEMENT
BEAR LAKE SSD
BEAR RIVER AOG
BEAR RIVER COMMISSION
BEAR RIVER HEALTH
BEAR RIVER MENTAL HEALTH
BEAR RIVER WATER CONSERVANCY

BEAVER CITY HOUSING AUTHORITY
BEN LOMOND CEMETERY

BENCHLAND WATER
BENSON CULINARY
WATER IMPROVEMENT

BIG COTTONWOOD
CANYON IMPROVEMENT

BIG PLAINS WATER/SEWER

BLANDING CEMETERY

BLUFF SERVICE AREA

BLUFF WATER WORKS

BONA VISTA WATER IMPROVEMENT

BOX ELDER COUNTY/
PERRY CITY FLOOD

BOX ELDER COUNTY/
WILLARD CITY FLOOD

BOX ELDER COUNTY SSD #1

BOX ELDER MOSQUITO

BRIDGERLAND COMMUNITY ICE ARENA

BUILDING AUTHORITY KANE COUNTY
WATER CONSERVANCY

C

CACHE COUNTY EMS AUTHORITY
CACHE METRO PLANNING
CACHE MOSQUITO

CACHE VALLEY TRANSIT

CACHE WATER

CANYONLANDS HEALTH CARE

CARBON COUNTY RECREATION AND
TRANSPORTATION SSD

CARBON COUNTY RECREATION
TRANSPORTATION LOCAL
BUILDING AUTHORITY

CARBON WATER CONSERVANCY

CASTLE DALE BUILDING COMMISSION

CASTLE VALLEY SSD

CEDAR CITY HOUSING AUTHORITY

CEDARVIEW-MONTWELL SSD

CENTRAL BOX ELDER FIRE

CENTRAL DAVIS SEWER

CENTRAL IRON COUNTY
WATER CONSERVANCY

CENTRAL UTAH 911

CENTRAL UTAH COUNSELING

CENTRAL UTAH PUBLIC HEALTH

CHURCH WELLS SSD

COLLEGE-YOUNG MOSQUITO

CORINNE DRAINAGE DISTRICT #1

COTTONWOOD HEIGHTS
PARKS/RECREATION

COTTONWOOD IMPROVEMENT

COUNCIL ON AGING-GOLDEN AGE

CRESCENT CEMETERY

D

DAGGETT COUNTY MOSQUITO

DAMMERON VALLEY FIRE

DAVIS/WEBER COUNTY
CANAL COMPANY

DAVIS COMMUNITY
HOUSING AUTHORITY

DAVIS CONSERVATION

DAVIS MOSQUITO ABATEMENT

DAVIS-SALT LAKE AERIAL SPRAY

DESERET-OASIS SSD

DIAMOND VALLEY FIRE

DIXIE DEER SSD

DUCHESNE CONSERVATION

DUCHESNE COUNTY
WATER CONSERVANCY

E

EAST DUCHESNE CULINARY
WATER IMPROVEMENT

EAST ZION SSD

EASTLAND SSD

EDEN PARK SERVICE

ELK MEADOWS SSD

EMERY COUNTY CARE AND
REHABILITATION CENTER

EMERY COUNTY FIRE

EMERY COUNTY RECREATION

EMERY COUNTY SSD #1

EMERY WATER CONSERVANCY

EMIGRATION IMPROVEMENT

ENTERPRISE VALLEY MEDICAL

EPHRAIM AMBULANCE

F

FIELDING CEMETERY

FIVE COUNTY AOG

FLAMING GORGE
ROAD/TRANSPORTATION

FOUR CORNERS BEHAVIORAL HEALTH

FREEDOM ACADEMY

FRUITLAND SSD

G

GARDEN CITY CEMETERY

GARDEN CITY FIRE

GRAND COUNTY CEMETERY

GRAND COUNTY RECREATION

GRAND COUNTY TRANSPORTATION

GRAND WATER/SEWER

GRANTSVILLE CONSERVATION

GREATER SALT LAKE CITY MUNICIPAL

GREEN HILLS WATER/SEWER

GROUSE CREEK SOLID WASTE

GROUSE CREEK SSD

GUNLOCK SSD

GUNNISON VALLEY POLICE

GUNNISON VALLEY RECREATION

H

HANNA WATER/SEWER

HEBER VALLEY SSD

HOOPER WATER IMPROVEMENT

HOUSING AUTHORITY OF
CARBON COUNTY

HOUSING AUTHORITY OF
SALT LAKE CITY

HOUSING AUTHORITY OF
SOUTHEASTERN UTAH

HOUSING AUTHORITY OF UTAH COUNTY

HOUSING CONNECT

HURRICANE REDEVELOPMENT AGENCY

HYDE PARK CEMETERY

I

INDIAN RIDGE WATER CONSERVANCY

INTERMOUNTAIN POWER

J

JENSEN WATER IMPROVEMENT

JOHNSON WATER IMPROVEMENT

JORDAN RIVER COMMISSION

K

KANE COUNTY TASK FORCE

KANE COUNTY WATER CONSERVANCY

KEARNS IMPROVEMENT

L

LA SAL RECREATION

LAKE POINT CEMETERY/PARKS

LAKE POINT IMPROVEMENT

LITTLE MOUNTAIN SERVICE AREA

LOCAL BUILDING AUTHORITY
OF BLUFFDALE

LONE PEAK PUBLIC SAFETY

LONG VALLEY SEWER IMPROVEMENT

M

MAESER WATER IMPROVEMENT

MAGNA MOSQUITO

MANTI AMBULANCE

METRO FIRE AGENCY

MEXICAN HAT SSD

MIDVALLEY IMPROVEMENT

MIDWAY SANITATION

MILITARY INSTALLATION DEVELOPMENT

MILLARD CONSERVATION

MOAB MOSQUITO

MOAB VALLEY FIRE

MORGAN CITY
REDEVELOPMENT AGENCY
MORGAN CONSERVATION
MOUNTAIN GREEN FIRE
MOUNTAIN GREEN SEWER
MOUNTAIN MEADOW SSD
MOUNTAIN REGIONAL WATER
MOUNTAINLAND AOG
MT OLYMPUS IMPROVEMENT
MUNICIPAL BUILDING AUTHORITY
OF VERNAL
MUTTON HOLLOW IMPROVEMENT
MYTON CITY HOUSING AUTHORITY

N

NEOLA COMMUNITY PARK
NEOLA WATER/SEWER
NEW HARMONY VALLEY SSD
NORTH DAVIS FIRE
NORTH DAVIS SEWER
NORTH FORK SSD
NORTH PARK POLICE
NORTH POINT SOLID WASTE
NORTH SANPETE AMBULANCE
NORTH SEVIER RECREATION
NORTH SUMMIT FIRE
NORTH SUMMIT RECREATION
NORTH TOOELE SSD
NORTH UTAH VALLEY ANIMAL
NORTH VIEW FIRE

O

OGDEN HOUSING AUTHORITY
OGDEN PREPARATORY ACADEMY
OGDEN VALLEY PARKS SERVICE AREA
OGDEN VALLEY
RECREATION/TRANSMISSION

OGDEN-WEBER TECH COLLEGE
OQUIRRH RECREATION/PARKS
P
PARK CITY FIRE
PAUNSAUGUNT CLIFFS SSD
PEOA RECREATION
PERRY-WILLARD WASTEWATER
TREATMENT PLANT
PINE MEADOW MUTUAL WATER
PINE VALLEY LOCAL ADMINISTRATIVE

PINE VALLEY SSD
PINON FOREST SSD
PIONEER SSD
PLEASANT GROVE
METROPOLITAN WATER
POWDER MOUNTAIN WATER/SEWER
PRICE RIVER WATER IMPROVEMENT
PRICE RIVER WATERSHED
CONSERVATION
PROVO CITY HOUSING AUTHORITY
PROVO METROPOLITAN WATER

R

RANDOLPH FIRE
RICHMOND CEMETERY
RIVERSIDE CEMETERY
RIVERSIDE COMMUNITY SSD
ROOSEVELT CITY HOUSING AUTHORITY
ROY WATER CONSERVANCY
RURAL WATER ASSOCIATION OF UTAH

S

SALT LAKE CITY MOSQUITO
SALT LAKE CONSERVATION
SALT LAKE COUNTY SERVICE AREA #3
SALT LAKE URBAN SEARCH/RESCUE

SAN JUAN COUNTY TRANSPORTATION
SAN JUAN COUNTY
WATER CONSERVANCY
SAN JUAN MENTAL HEALTH-
SUBSTANCE ABUSE
SAN RAFAEL CONSERVATION
SANDY SUBURBAN IMPROVEMENT
SANPETE COUNTY FIRE
SCOFIELD RESERVOIR SSD
SEVIER COUNTY SSD #1
SIX COUNTY AOG

SKYLINE MOUNTAIN SSD
SNYDERVILLE BASIN
SPECIAL RECREATION
SNYDERVILLE BASIN
WATER RECLAMATION
SOLID WASTE SSD #1
SOUTH DAVIS SEWER
SOUTH DAVIS WATER IMPROVEMENT
SOUTH SALT LAKE VALLEY MOSQUITO
SOUTH SUMMIT CEMETERY
SOUTH UTAH VALLEY ANIMAL

SOUTH UTAH VALLEY ELECTRIC
SOUTH VALLEY SEWER
SOUTH VALLEY WATER RECLAMATION
SOUTH WEBER WATER IMPROVEMENT
SOUTHEASTERN UTAH ASSOCIATION OF
LOCAL GOVERNMENTS
SOUTHERN UTAH VALLEY POWER
SOUTHWEST MOSQUITO
SOUTHWESTERN SSD

ST. GEORGE AREA ECONOMIC
DEVELOPMENT
ST. GEORGE HOUSING AUTHORITY
STANSBURY PARK IMPROVEMENT
STANSBURY SERVICE AGENCY
SUGAR HOUSE PARK AUTHORITY

SUMMIT COUNTY SERVICE AREA #3
SUMMIT MOSQUITO

T

TABBY VALLEY PARKS/RECREATION
TAYLOR WEST WEBER
WATER IMPROVEMENT
TEASDALE SSD
THATCHER-PENROSE FIRE
THOMPSON SSD
THOMPSON SPRINGS FIRE
TICABOO UTILITY IMPROVEMENT
TIMBER LAKES WATER
TIMBERLINE SSD
TOOELE COUNTY HOUSING AUTHORITY
TOOELE VALLEY MOSQUITO
TRANS-JORDAN CITIES
TREMONTON-GARLAND DRAINAGE
TRIDELL-LAPOINT WATER
IMPROVEMENT
TROPIC CEMETERY

U

UINTAH ANIMAL CONTROL/SHELTER
UINTAH BASIN ASSISTANCE COUNCIL
UINTAH BASIN AOG
UINTAH BASIN NARCOTICS
STRIKE FORCE
UINTAH CARE CENTER
UINTAH COUNTY/VERNAL INTERLOCAL
UINTAH FIRE
UINTAH HEALTH CARE
UINTAH HIGHLANDS IMPROVEMENT
UINTAH IMPACT MITIGATION
UINTAH MOSQUITO
UINTAH RECREATION

UINTAH TRANSPORTATION
UINTAH WATER CONSERVANCY
UTAH LOCAL GOVERNMENTS
TRUST BOARD
UNIFIED FIRE
UPPER COUNTRY WATER IMPROVEMENT
UTAH ASSOCIATION OF
CONSERVATION DISTRICTS
UTAH ASSOCIATION OF
SPECIAL DISTRICTS
UTAH CHIEFS OF POLICE
UTAH COMMUNICATIONS
UTAH INLAND PORT AUTHORITY
UTAH LEAGUE OF CITIES/TOWNS
UTAH LOCAL GOVERNMENTS TRUST
UTAH MUNICIPAL POWER
UTOPIA

V

VERNAL CITY DEVELOPMENT/
RENEWAL AGENCY
VERNON WATER WORKS

W

WANSHIP CEMETERY
WARREN/WEST WARREN
WATER IMPROVEMENT
WASATCH COUNTY CONSERVATION
WASATCH COUNTY FIRE
WASATCH FRONT REGIONAL COUNCIL
WASATCH FRONT WASTE
AND RECYCLING
WASATCH INTEGRATED WASTE
WASATCH MENTAL HEALTH
WASHINGTON COUNTY FLOOD CONTROL
WASHINGTON COUNTY SOLID WASTE
WASHINGTON COUNTY
WATER CONSERVANCY

WASTE MANAGEMENT SERVICE
DISTRICT #5
WAYNE COMMUNITY HEALTH
WEBER BASIN WATER CONSERVANCY
WEBER CONSERVATION
WEBER HOUSING AUTHORITY
WEBER MOSQUITO
WEBER/MORGAN NARCOTICS
STRIKE FORCE
WEST CORINNE WATER
WEST ERDA IMPROVEMENT
WEST HAVEN SSD
WEST MILLARD MOSQUITO
WEST WARREN COMMUNITY PARK
WESTERN KANE COUNTY SSD #1
WESTERN STATES WATER
WESTERN UTAH BASIN MOSQUITO
WHITE CITY WATER IMPROVEMENT
WHITE HILLS SSD
WOLF CREEK WATER / SEWER
WOMEN OF WATER
WOODRUFF CEMETERY
WOODRUFF FIRE
WOODS CROSS CITY REDEVELOPMENT



Great things in
business are
never done by
one person.

They're done by
a **team of people.**

— Steve Jobs

55 South Highway 89
North Salt Lake, UT 84054
tel: 801.936.6400
toll: 800.748.4440

www.utahtrust.gov